

Flint Residents:

You and Your Family Need Water
Here's a Quick Reference Guide to Making it Safe

March 17, 2016

What water is safe to drink?



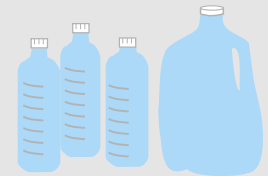
pregnant women



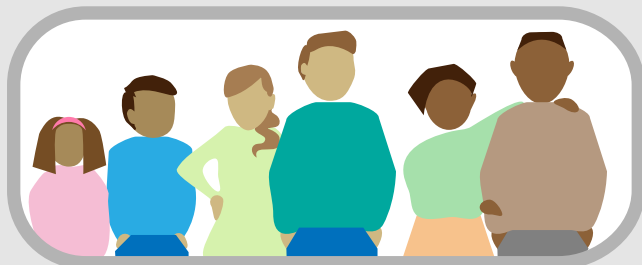
breastfeeding women



all kids under age 6 including baby formula



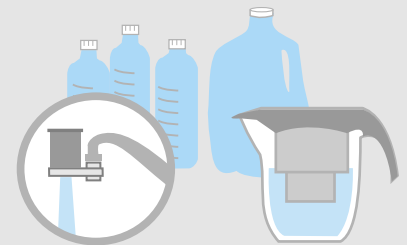
ONLY bottled water



kids older than 6, teenagers & adults



pets



ONLY bottled or filtered water

What water can I use?

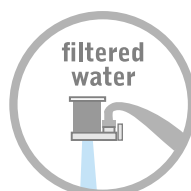


OK to wash hands & bathe*

BUT: don't let it get into your (or your kids') mouth

OK to wash dishes

BUT: use filtered water washing baby bottles & kids' cups



OK to cook with

OK to brush teeth



Boiling Water DOES NOT Remove Lead

*Rashes have many causes, but no medical link between unfiltered water and rashes has been found. If you have concerns, call your primary care provider or call 2-1-1.

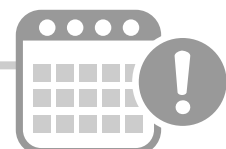
What else should I do?

Every morning

Run unfiltered cold water for at least 5 minutes to flush the pipes.

Every week

Clean the aerators in all faucets and clean the screens in your water filters.

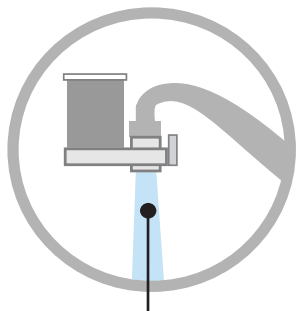


How do I use the filter?

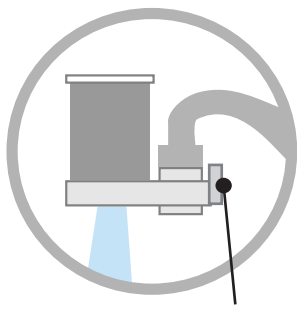
- ▶ **First, check that it is NSF-Certified*** to remove lead.
- ▶ **Follow the manual** that comes with your filter for correct installation.
- ▶ **Do not run hot water** through the filter.
- ▶ **Start with cold filtered water** then heat to cook.
- ▶ **Your hot water heater tank should be flushed regularly.** Follow manufacturer's instructions or contact a licensed professional for assistance.

You can run unfiltered water with the filter attached.

Turn lever for filtered water to flow from under the cartridge.



unfiltered from under faucet

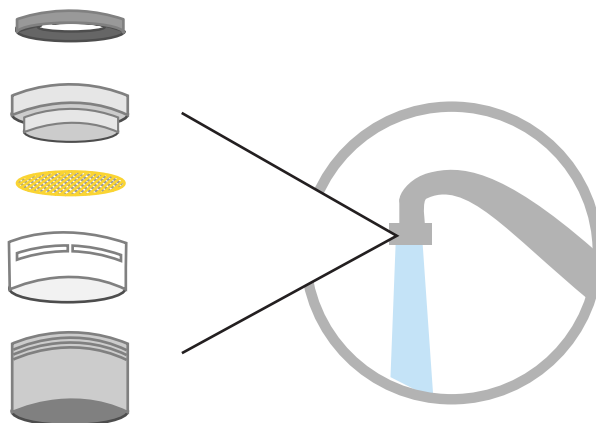


lever

Change filter when indicator turns red. ◆

Clean Faucet Aerators Weekly

- ➊ Unscrew the end-piece of your faucet where the water comes out. This is the aerator. (Make note of how the pieces come off, to put back together. Parts vary.)
- ➋ Remove the screen and rinse out any dirt that has collected.
- ➌ Screw it back on.



Important Resources for Flint Residents

Medical Questions

Rashes: You can contact your primary care provider and call 2-1-1

Blood tests: You can contact your primary care provider, or call 810-257-3833

Appearance or odor of your water

Call Flint Water Plant: 810-787-6537

Questions about safe water

- ▶ email flintwater@epa.gov
- ▶ visit www.epa.gov/Flint
- ▶ call EPA's hotline: 810-434-5122

 @EPAGreatLakes

 facebook.com/EPAGreatLakes



*The U.S. EPA does not endorse NSF International, its products, services, or any product or service that displays the NSF International mark. U.S. EPA does not certify the product. U.S. EPA is aware that the certification mark belongs to an independent organization that certifies these products, and that there are other third party testing services including UL and WQA.